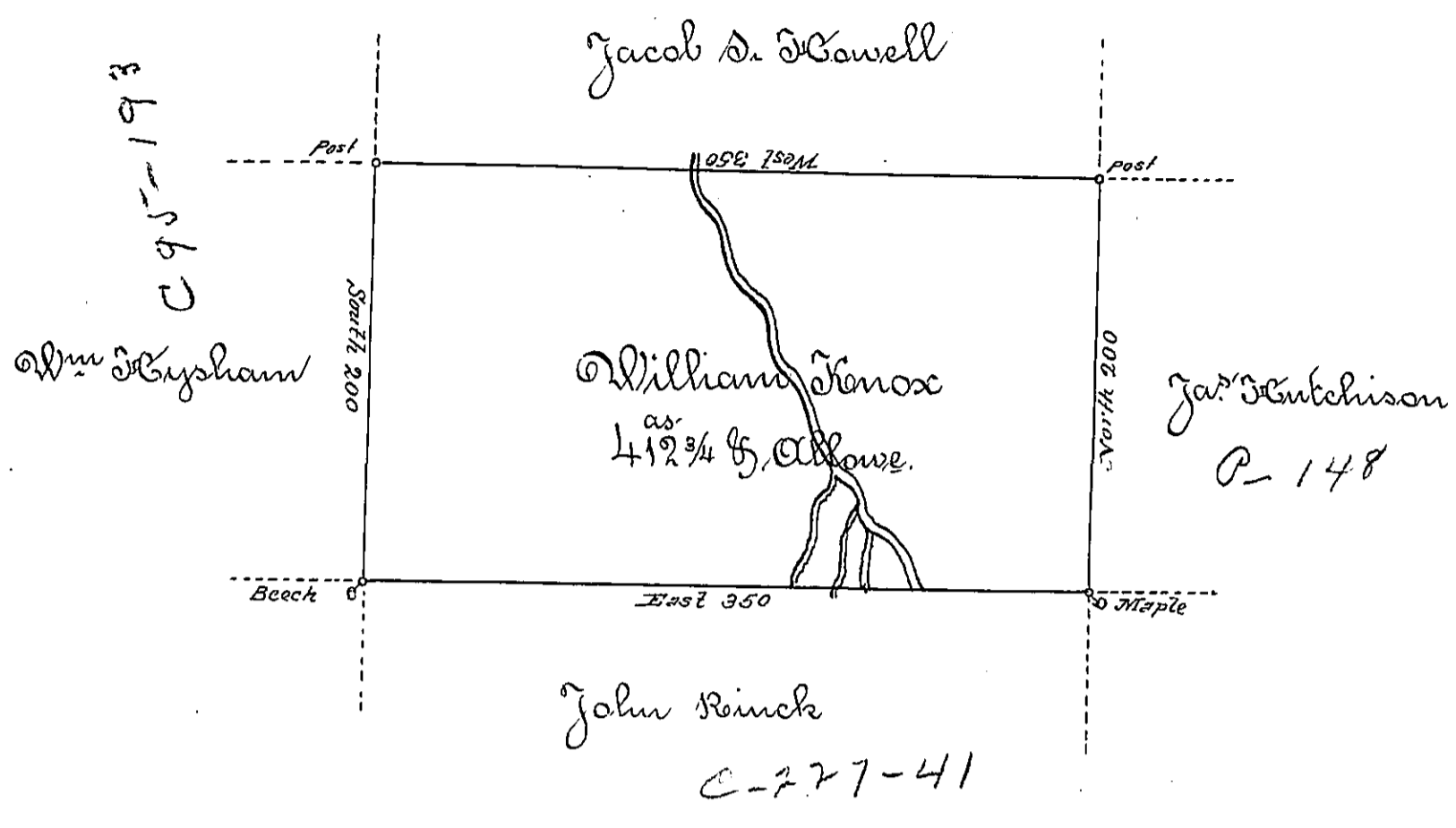


C-95-192



A Draught of a tract of land called Situate on the Waters of Snake Creek adjoining Lands of John Reinch (deceased) in Stoke Township Northumberland County surveyed the 2<sup>nd</sup> Day of Sept: 1786 for William Knox by Virtue of his Warrant Dated the 18<sup>th</sup> Day of July 1786. Containing four Hundred & twelve acres  $\frac{3}{4}$  and allowe of six % Cent for Roads &c

To John Lukens Esq }  
 Survey Genl }

by Wm Gray D.D.

+ (now) Luzerne County.

IN TESTIMONY that the above is a copy of the original remaining on file in the Department of Internal Affairs of Pennsylvania, made conformably to an Act of Assembly approved the 16th day of February, 1833, I have hereunto set my Hand and caused the Seal of said Department to be affixed at Harrisburg, this fifth day of November 1895-

*James Watta*  
 Secretary of Internal Affairs.